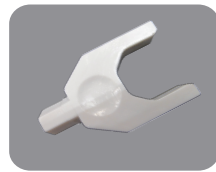


Oral Irrigator - Installation

HS0120B



1



Use the wrench to unscrew the faucet aerator body.



2

Remove the faucet aerator.



3

Choose a connector which is suitable for your faucet, and install the connector to the water diverter.



4

Be sure the washer (gasket) is on the connector, then screw it onto the end of the faucet.



5

Connect the silicone tube to the side of the water diverter.



6

Use the Double Sided Foam Tape to stick the Combination Rack onto the wall and place the handle & the spray nozzles. Then the installation is complete.



Reminders:

Please put the spray nozzle into your mouth and face down before opening the faucet. Then it can prevent the water from spraying everywhere!