

## Simply Modern Installation

### \*Ozone Faucet - Spring\*



A. Ozone faucet



B. Ozone machine



D. Ring Light Fitting



C. AC Adapter



F. Silicone tube

\* Ring Light Fittings: Ring light Base (1), MicroUSB (1),  
Rubber Horseshoe (1), 2mm Alley wrench (2), M4 screw (2).

### Kitchen Mixer Faucet

Name : FT1688SS / Simply Modern

Material : 304 Stainless steel

Size : 260(W)x420(H)mm

Features : Kitchen faucet · Ozone cleaning cleaner.

### Ozone machine

Color : White

Power supply voltage: DC 12V  $\ominus$   $\oplus$

Power consumption: 4.5W (max)

Size: 100(L) x 100(W) x 32(H) mm

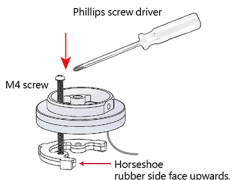
Weight : 300g  $\pm$  10%

Ozone output: 100mg/hr

Protective device: 10minutes auto cut-off protection

Ozone spillover density in an open area is under 0.01 ppm, certified by SGS test.

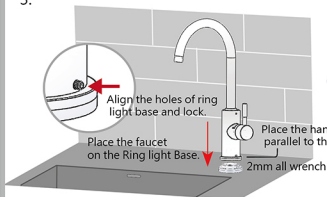
1.



step1.

Use M4 screw to combine the Ring light and one side of the Horseshoe.

3.



step3.

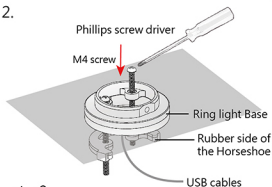
Place the handle of faucet parallel to the wall. Then put the faucet onto the ring light base and also align the holes of ring light base, and use the 2mm allen wrench to lock the 2 hex socket cap screws which is on the both sides of the ring light base.

step5.

First, connect the other side of the silicon tube to the Faucet and Ozone machine. Second, connect USB cable to Ozone machine. Third, Connect Power to the power port and then press the button to set Ozone machine to standby mode.

**\* Warning !**  
Do not drink ozonied non-potable water directly.

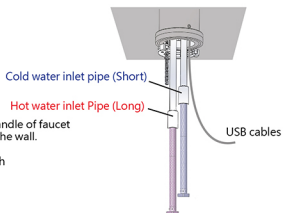
2.



step2.

Place USB cables and Horseshoe into the reserved hole through the sink. Leave the horseshoe under the shelf and the Ring light on the shelf, use another M4 screw to screw the base of the ring light tightly.

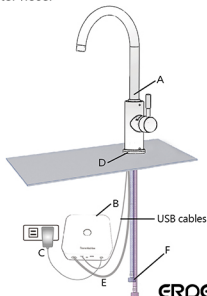
4.



step4

Connect Cold (Short) /Hot (Long) water hose.

5.



ERDEU