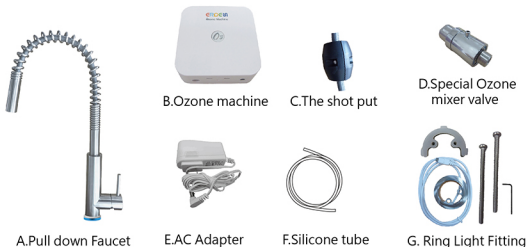


Spring Installation

ERDEN Stainless steel pull down kitchen faucet




* Ring Light Fittings: Ring light Base (1), MicroUSB (1), Rubber Horseshoe (1), 2mm Alley wrench (2), M4 screw (2).

Kitchen Mixer Faucet

Name : FT1588SS / Spring
Material : 304 Stainless steel
Size : 340(W)x530(H)mm
Features : Pull down faucet · Ozone cleaning cleaner.

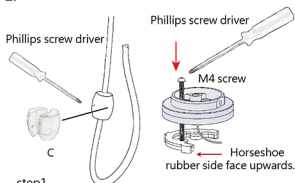
Ozone machine

Color : White
Power supply voltage: DC 12V 
Power consumption: 4.5W (max)
Size: 100(L) x 100(W) x 32(H) mm
Weight: 300g ± 10%
Ozone output: 100mg/hr
Protective device: 10 minutes auto cut-off protection

*** Warning ! Do not drink ozonied non-potable water directly.**

Ozone spillover density in an open area is under 0.01 ppm, certified by SGS test.

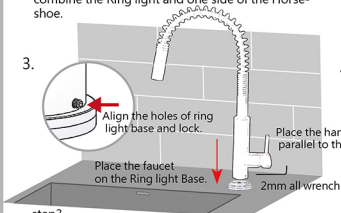
1.



step1.

Prepare the Shot Put on the side. Use M4 screw to combine the Ring light and one side of the Horseshoe.

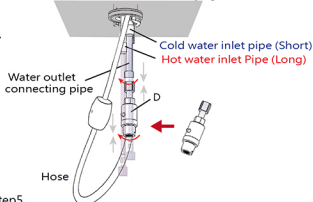
3.



step3.

Place the handle of faucet parallel to the wall. Then put the faucet onto the ring light base and also align the holes of ring light base, and use the 2mm alley wrench to lock the 2 hex socket cap screws which is on the both sides of the ring light base.

5.



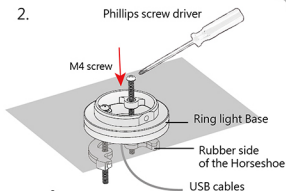
step5.

Connect Special Ozone mixer valve (D), Hose and Water outlet connecting pipe properly, and then connect Cold/Hot water hose.

step6.

First, connect the other side of the silicon tube to the Special Ozone mixer valve and Ozone machine. Second, connect USB cable to Ozone machine. Third, Connect Power to the power port and then press the button to set Ozone machine to standby mode.

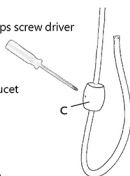
2.



step2.

Place USB cables and Horseshoe into the reserved hole through the sink. Leave the horseshoe under the shelf and the Ring light on the shelf, use another M4 screw to screw the base of the ring light tightly.

4. Phillips screw driver



step4.

Use Phillips screwdriver to lock the shot put with the hose in the right position.

6.

